



Women and Gender
Equality Canada

Femmes et Égalité
des genres Canada

Blueprint Project

Project Launch

Alberta Council of Women's Shelters

September 18th, 2023



Land Acknowledgement



About ACWS

Vision:

We believe in a world free from violence and abuse

Mission:

To support our members and work with them to end domestic violence and abuse



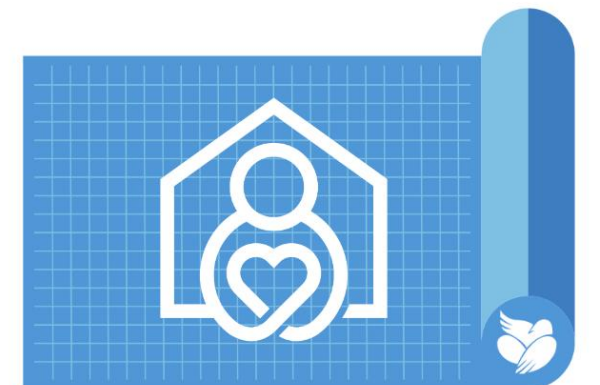
The Ultimate Community Collaboration

Why the Project Started:

The Blueprint Project looked to transform the way we work together, the way we serve clients and improve the overall outcomes for the clients we serve.

Grew out of our learnings from the

Safety From Domestic Violence Project



4 Pillars of Engagement

Blueprint Project: Keeping People Experiencing Domestic Violence Safe



Enhance Wrap-Around Support Responses

Identify opportunities for community support organizations to enhance wrap-around supports for clients.



Collaborate
Encourage Cross Sectoral Collaboration

Explore open information sharing and identify collaboration opportunities to simplify clients' navigation challenges.



Standardize Risk Assessment Tools

Develop standardized tools to address the needs of client (focus on risk and safety).



Develop Intersectional Policies & Service Provision

Combine local expertise and evidence-informed tools and practices to develop intersectional policies and service provision models (i.e., The Blueprint).



ACWS...



Support community collaboration & coordination

Provide data management & technical support

Act as a support to 3 CoP

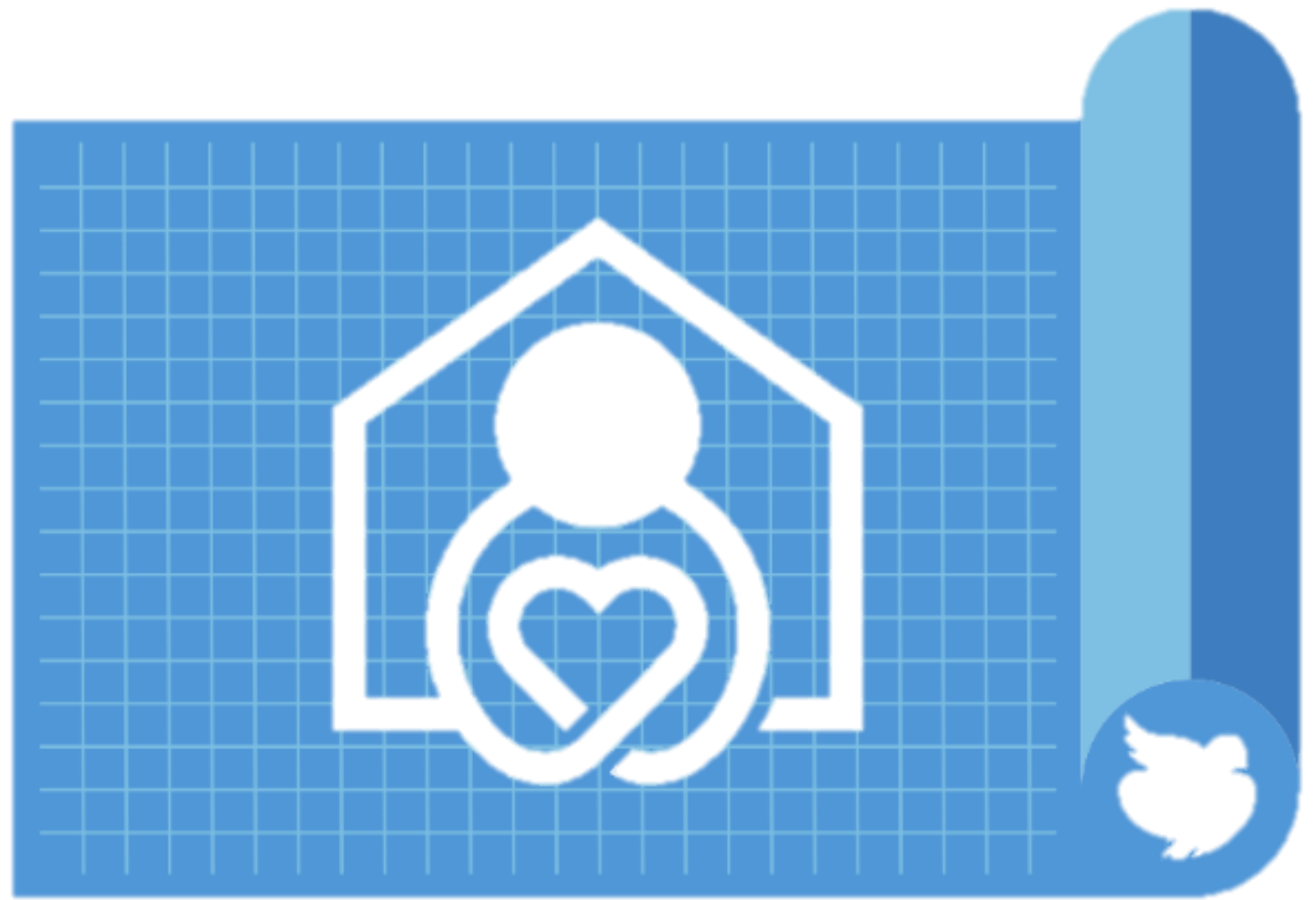
Provide training to build knowledge and skills in provision of client centred services

Support the developmental evaluation process

Maintain relationships with Project Partners, Funders, External Contractors

Provide Project Management & Stewardship

Submit funding reports



And what we
didn't expect...

Managing through Covid

Ultimately, the Project will...

Improve

Improve women and children's safety through coordinated wraparound supports and services

Enhance

Enhance the validity and reliability of assessment tools that support the safety of women and children fleeing DV

Develop

Develop a Blueprint for the entire assessment process and ongoing case management



How is it Different?

Access to training and support to build capacity on development and delivery of client-centred assessments and service provision

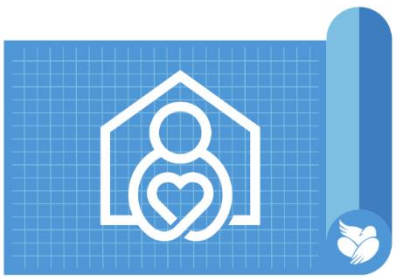
Community agencies coordinating and collaborating on response and service delivery for domestic violence

Learning across and from 2 regional communities & 3 demographic communities

Client centred versus program or referral based → sacred story



So Far...



Established 2 Community Working Groups with Signed Information Sharing Agreements

GROUP COMPOSITION AND SOME OF ITS EVOLVING TASKS

- Comprised of agency leaders & frontline staff who work with individuals experiencing DV & intersect with sheltering agencies
- Signed robust Information Sharing Agreements enabling the sharing of client-consented data
- To review risk assessment tools, case management protocols and processes

Established a Provincial Working Group

GROUP COMPOSITION AND SOME OF ITS EVOLVING TASKS

- Representatives are from the Community Working Groups & Communities of Practice across Alberta
- Group convenes to share learnings from the 2 Community Working Groups & 3 Communities of Practice

Established Communities of Practice

GROUP COMPOSITION AND SOME OF ITS EVOLVING TASKS

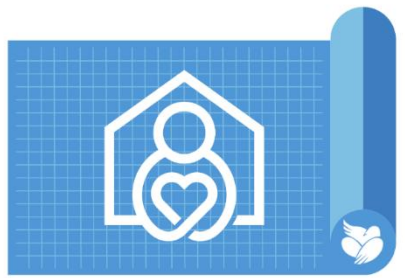
- Comprised of Indigenous communities, 2SLGBTQ+ People, & Newcomer, Immigrant & Refugee community members & staff in agencies providing domestic violence services & those they intersect with
- Communities identifying pathways to greater access and inclusion
- To review risk assessment tools, case management protocols and processes

Delivered frontline training to cross-sectoral agencies (ongoing)

MILESTONES

- Trained staff from both CWG and CoP in the Danger Assessment and MOSAIC tools
- Provided 3 Change Management Sessions to frontline staff and agency leaders
- Offered onboarding and training in the use of Iris (aka the App)

What's Happened...



Developmental Evaluation

MILESTONES:

- Ongoing with external Evaluator
- Process Evaluation launched in June 2021
- Findings help inform future meetings and group engagements
- Phase 2 of Evaluation launched in Winter 2022 (survey, focus groups and case-studies)

Information Sharing Agreements supported by the Iris (App) Onboarding & Training

MILESTONES:

- Agencies who have signed the ISA are able to collect and share client-consented data
- App is available for use outside of the Blueprint Project
- Training is offered to all members of the Community Working Groups

Assessment Revisions & Training

MILESTONES

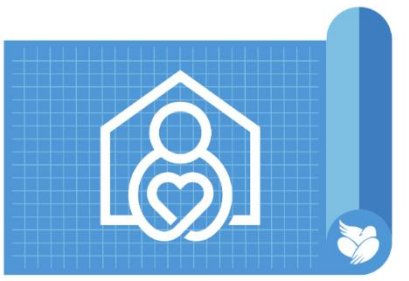
- Danger Assessment Tool (DA-I, DA-R, Walking the Path Together)
- Communities of Practice have revised MOSAIC Scale to ensure intersectionality
- Capacity building for frontline staff
- Free for member agencies and staff

Guide for Gaps Agency- Assessment Tool

MILESTONES

- Developed by 2SLGBTQ+ CoP Sub-Committee
- Agencies can walk through Assessment Tool to assess their level of inclusion to 2SLGBTQ+ clients and staff
- Provides a robust list of resources for follow-up and support

The Tools that were developed



The Information Sharing Agreement

The Iris Care Platform

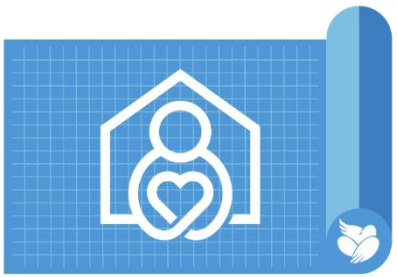
The MOSAIC

The DA: Danger Assessment

Empathy Map and Cultural Competency Training

The Guide for Gaps: A Walk through the process

The Information Sharing Agreements



Grande Prairie



Red Deer



Women and Gender
Equality Canada

Femmes et Égalité
des genres Canada

This project is funded through the generosity of Wage and Gender Equality Canada and the Alberta Council of Women's Shelters. We also wish to express our gratitude to the participating organizations and individuals of the Red Deer community who continue to provide their time, expertise and commitment to this project.

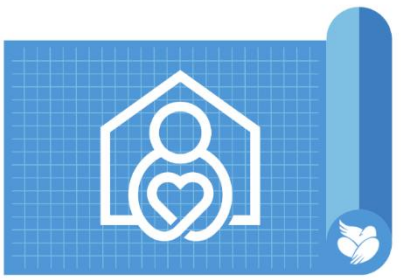


Women and Gender
Equality Canada

Femmes et Égalité
des genres Canada

This project is funded through the generosity of Wage and Gender Equality Canada and the Alberta Council of Women's Shelters. We also wish to express our gratitude to the participating organizations and individuals of the Red Deer community who continue to provide their time, expertise and commitment to this project.

The Information Sharing Agreements



Vision

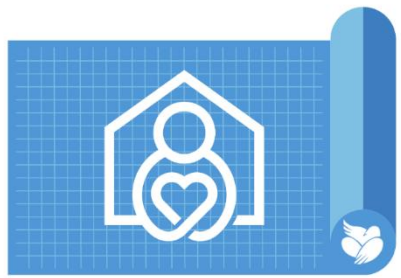
The well-being and security of clients and their families will be improved by sharing information to identify and address health and safety, through collaboration and coordination across the [community working group] partners.

**“Every client’s
story is sacred”**

Benefit to Clients

Responsible information sharing in an integrated family violence system is a critical mechanism to:

- Keep survivors safe and holding perpetrators to account.
- Increase client’s sense of confidence that their situation is understood and is being managed across a range of service providers, without having to repeat personal and sensitive information.
- Enable timely action to be taken to protect clients and children from further abuse and mitigate eminent danger.
- Enable a comprehensive risk identification and safety planning based on a full account of the facts and circumstances of each client’s situation.
- Offer the right sort and combination of advice, support and advocacy to be offered at the right time based on a full and accurate account of the client's needs and history, including other service contact and use.
- Improve the ability to offer wrap-around services and coordination of services for the client.
 - Reduce wait times as agencies coordinate services and programs.
 - Avoid the added distress of having to repeat details of their history or experience of DV and other circumstances each time they encounter a different service.



Client Forms: McTesterson, Testy

Region: Anderson/Danger Test Agency

Form Type: Assessment

Date Created: 3/1/2023 2:07 PM

Score: 0 Variable Danger

Created By: Ashley Reimer

Scoring Key:
0-14: Variable
15-25: Increased
26-35: Severe
36 or more: Extreme

Back View Shared Client Data New Danger Assessment for Immigrant Women

What is the App?

The Blueprint App is a PowerApp designed through Microsoft that can be used on an agency's desktop, tablet, or phone to record client data and view the data shared from another agency (with consent from the client).

The App allows organizations or programs to create and manage clients, collect intake data, collect assessment data and collect contact / case notes; with client-consent, assessment data and/ or intake data can be shared between agencies who have signed onto the Information Sharing Agreement.

If your agency isn't a signatory of the ISA but you're interested in using the App in your agency or program, we are happy to work with you to see how we can make this possible.

Interested in learning more about the App or onboarding for your program?

We can arrange a staff demo or training for your team.
Contact Ashley Reimer, Data Analyst
ashley.reimer@acws.ca

- Customizable
- User-friendly
- Can collect, store & share data
- Cost-effective
- Intuitive
- Runs off of your Microsoft 365 account

- The IRIS App was developed as a tool to support the Blueprint Project and the agencies involved in client support and wrap-around services.

- It was tested and updated with agencies from both Grande Prairie and Red Deer Communities of Practice.

- The app was designed to facilitate the sharing of information (only with client consent that can be revoked at any time) and utilize the assessment tools while being a user-friendly platform.

Communities of Practice



2SLGBTQ+ CoP, Indigenous CoP, NIR CoP – members of the community & service providers providing services to the community, those seeking to improve service delivery

Cross-sectoral, provincial networks uniting service providers

Identify barriers, gaps and opportunities to enhance and improve service delivery for clients and community

Review and revise assessment tools (e.g. MOSAIC revision process) to ensure an intersectional, trauma-informed approach

MOSAIC

Speaks to the complexity of women's needs from a gender-based, domestic violence perspective

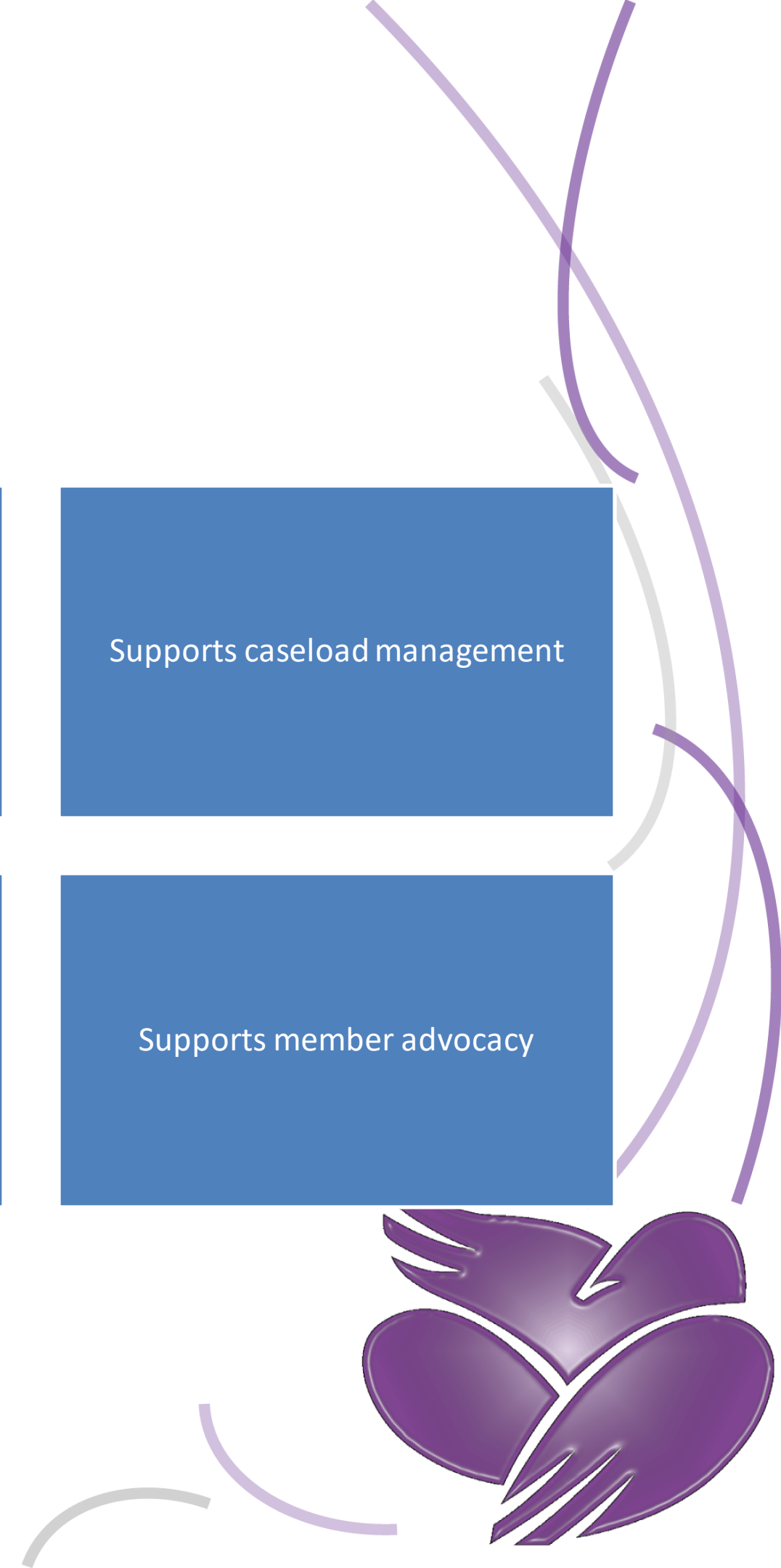
Informs service decisions and case planning

Supports caseload management

Helps understand long-term and regional trends in shelter service users

Informs promising practice development

Supports member advocacy



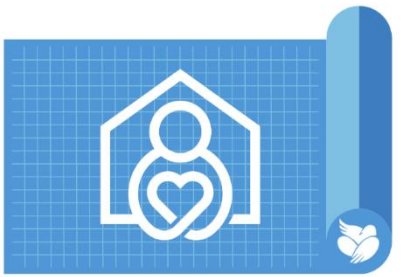


Safety & Change: Why the Danger Assessment The Need for Risk Assessment

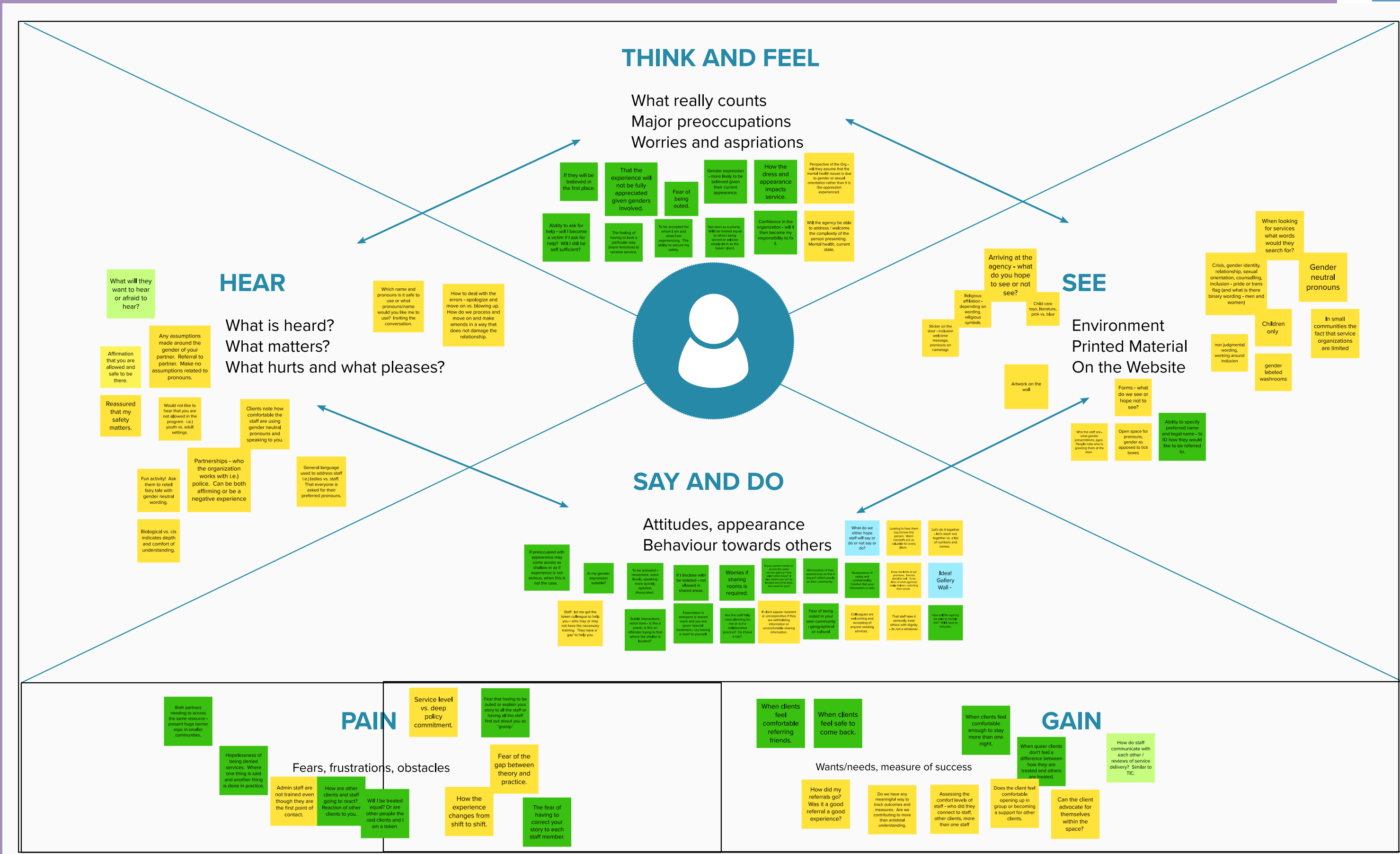
“A Woman living in danger is **in even greater danger** when she **tries to leave.**”

Jana G. Pruden, “Domestic silence: Meet the faces of abuse”
Edmonton Journal, 2015

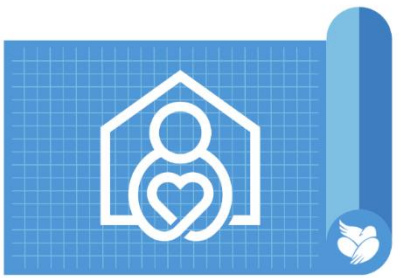
Cultural Competency Learning Modules – Red Deer



Guide for Gaps Self-Assessment Tool – 2SLGBTQ+ CoP



What's Next...



Launch of the Guide for Gaps



Looking to continue the Communities of Practice



Envision the 4 pillars of the Project to live on within Grande Prairie and Red Deer – continue to offer enhanced wraparound services



Brainstorming and planning for a way to acknowledge the energy, time & work of the Project Partners



Development & Dissemination of the Blueprint



Dissemination of the Impact Evaluation Results



Continue to offer training for Project Partners

Thank you



Project site:
acws.ca/blueprintproject



Women and Gender
Equality Canada

Femmes et Égalité
des genres Canada

